

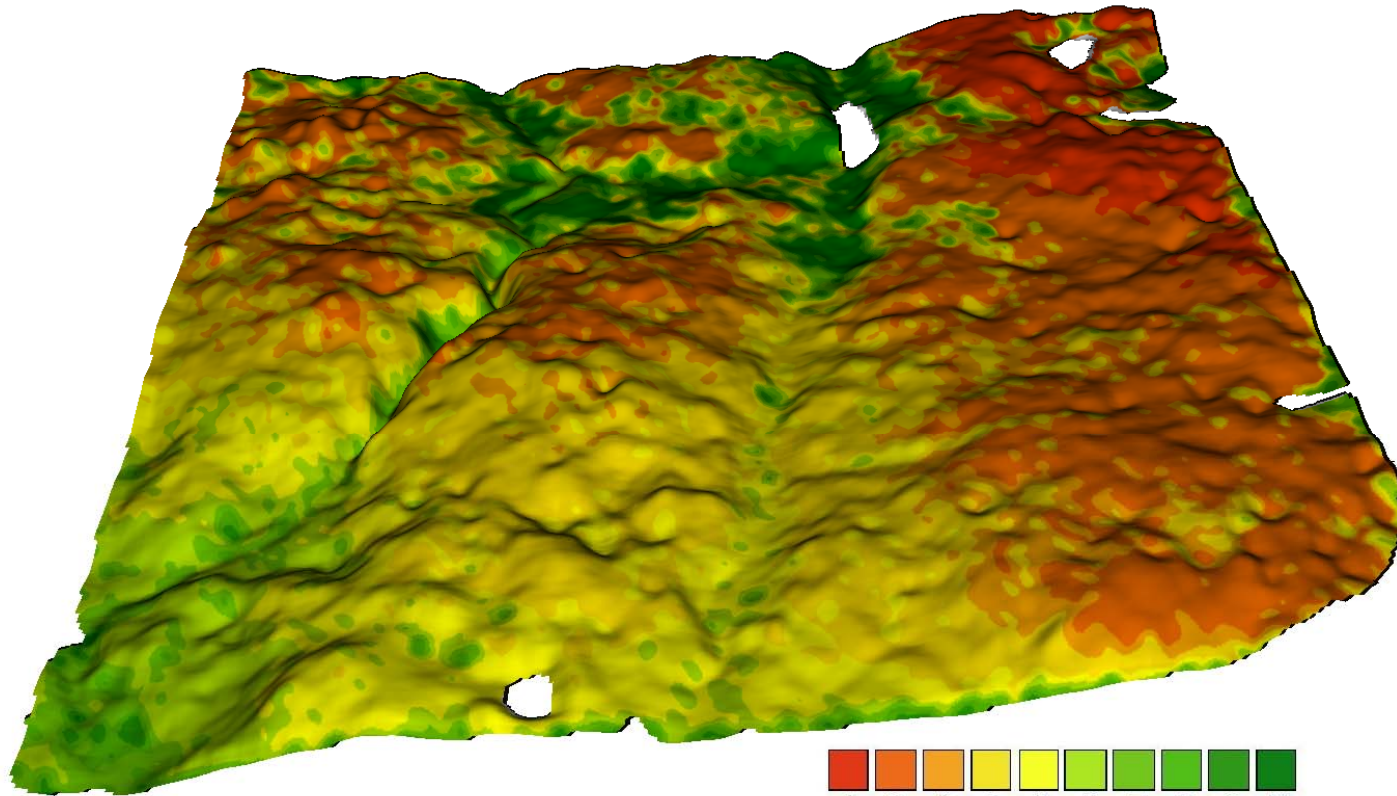
# Creelman

(East of Weyburn)



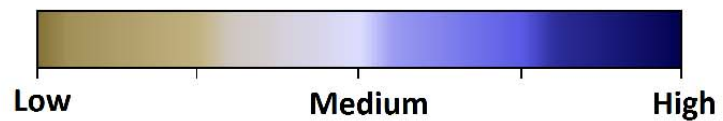
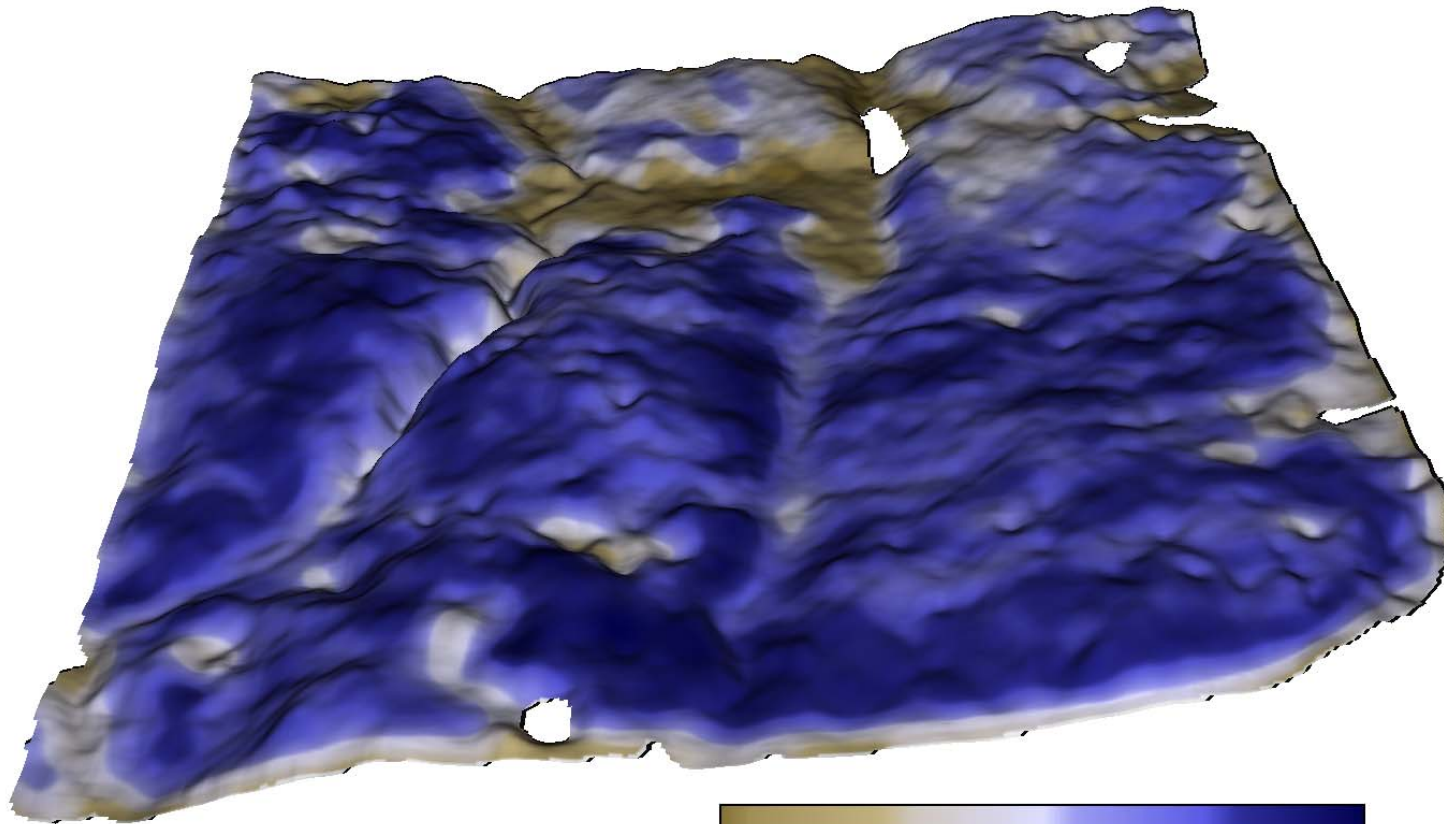
# SWAT MAPS

*Soil, Water And Topography MAPS*



# *BAY MAPS*

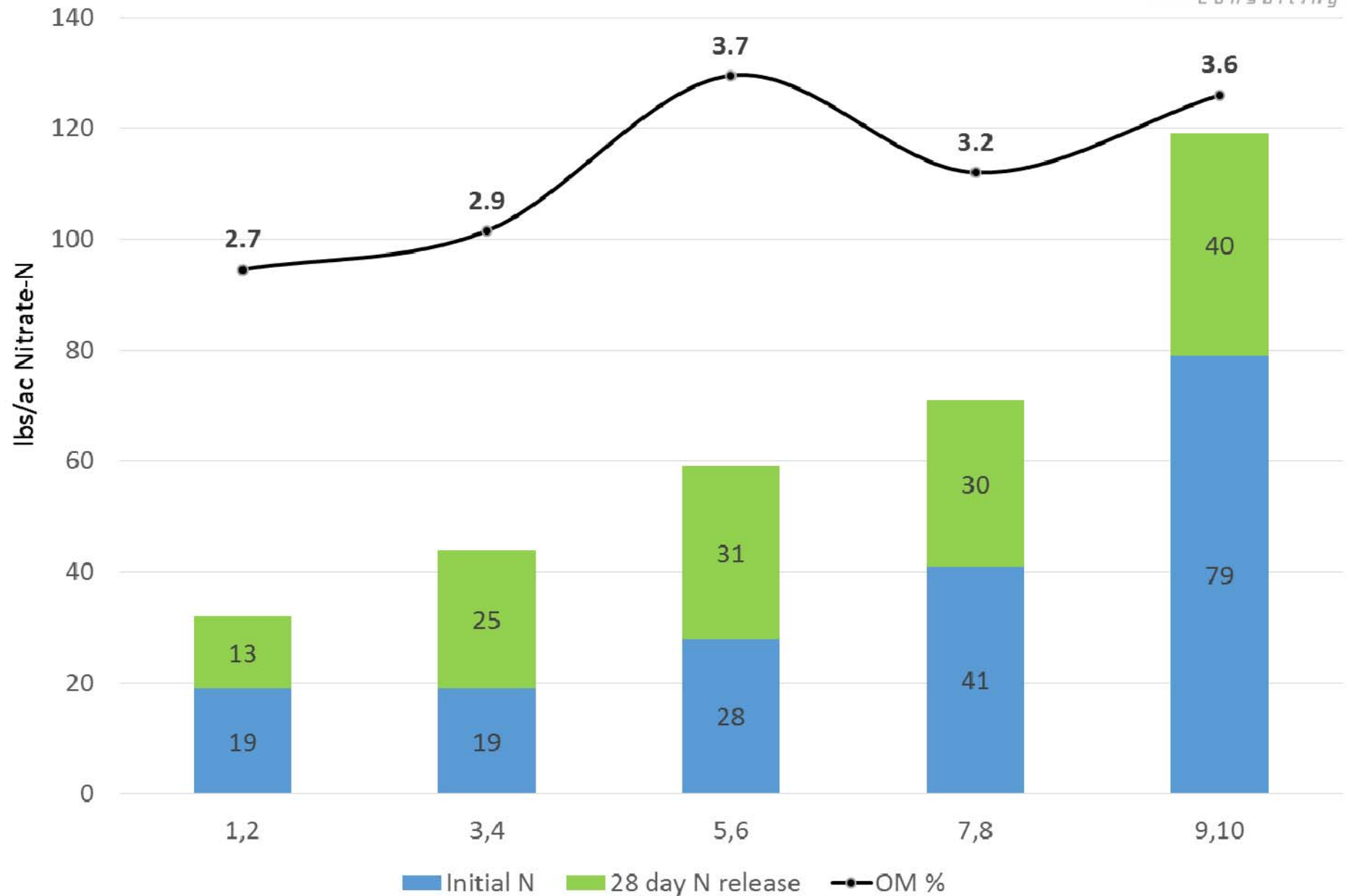
*Biomass And Yield MAPS*



# Zone 4 Zone 8 Zone 10



# JVM (North Horner) - Henry Test 2015





# Variable Rate MAPS Report

# Example Creelman Farm

(5) North Horner

Sec 3 11 10

Acres: 660 (650.7 GPS)

**Crop:** Wheat-Durum(Brigade)

**Last Crop:** Canola-Liberty

**Yield Goal (bu/ac)** 45.3

**YieldGoal NH3**

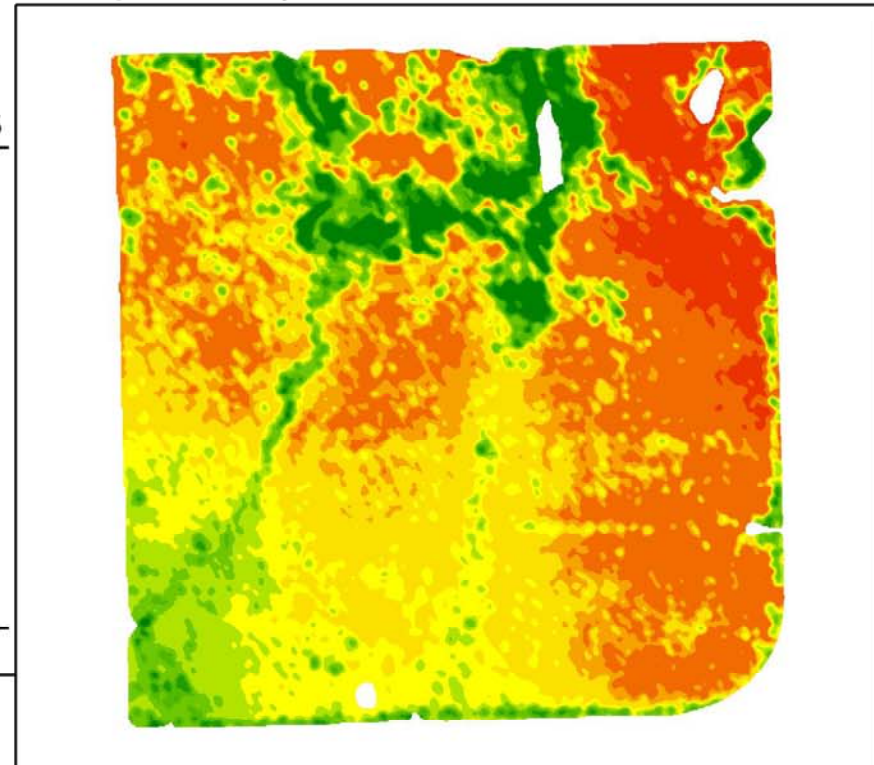
Zone	Acres	(bu/ac)	Layer 1	Layer 2	Layer 3	Layer 4	Layer 5
1	39.6	35	110				
2	152.6	40	110				
3	79.7	45	110				
4	142.4	50	105				
5	85.3	55	100				
6	55.7	55	100				
7	33.5	50	95				
8	21.3	50	85				
9	13.8	30	50				
10	27	15	30				

**Average:** 45.3 100.6

**Notes:** Low P in zones 1-6. High salinity in zones 7-8. Very high salinity in zones 9-10.

**Machine Controller:** Raven Viper Pro

**Prescription File:** Njvm5NorthHornerDurumOct2015



Field Area	% Field	N(13)	N(14)	N(15)	OM %	pH	P	K	S	Cl	Zn	Cu	B	Texture	Salinity	CMPT Date
Zone 1,2	30	24	19	19	3.5	7.5	4	288	160	33	0.7	0.9	1.2	l	1.11	Oct 15, 2012
Zone 3,4	34	16	13	19	3.5	7.1	7	363	48	12	0.6	0.8	0.9	l	0.36	Oct 15, 2012
Zone 5,6	22	16	13	28	3.5	6.1	9	305	160	16	1.5	1.0	0.8	l	0.82	Oct 15, 2012
Zone 7,8	8	28	20	41	3.4	7.6	16	308	160	61	0.6	1.3	2.0	cl	2.58	Oct 15, 2012
Zone 9,10	6	93	68	79	3.3	8.0	15	294	160	107	1.0	1.4	2.7	cl	4.55	Oct 15, 2012